

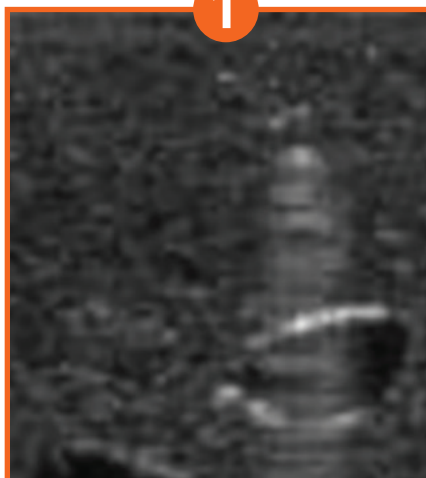
Ultrasound Guided Venous Access

Transverse Approach

In the transverse approach, a transverse view of the vessel is obtained and it should appear round or oval in shape, use compression to aid in differentiating veins from arteries. Place your needle at $\sim 45^\circ$ angle in the center of your linear probe. Use “Stop and Go technique”, advance the needle until seen and then stop. Micro slide the probe away until needle is lost. Stop, repeat until needle is in view.



1



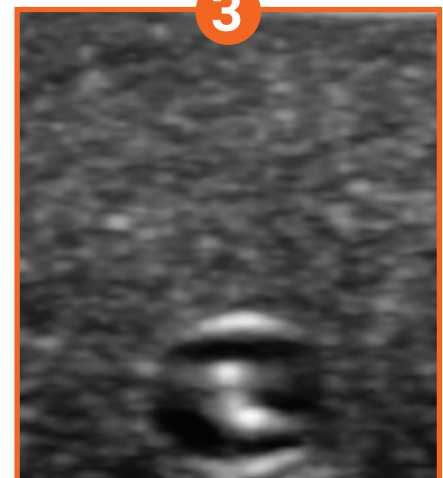
Needle shaft
with ring down
artifact

2

“Tenting” of
the vessel
wall



3



Needle
centralized
in lumen



POCUS™
Point-of-Care Ultrasound
Certification Academy

The Point-of-Care Ultrasound (POCUS) Certification Academy™ exists to provide physicians and advanced care providers the opportunity to collaborate in the shared mission of improving global health and setting the standards of excellence in POCUS.

[Pocus.org/Tips](https://pocus.org/Tips)