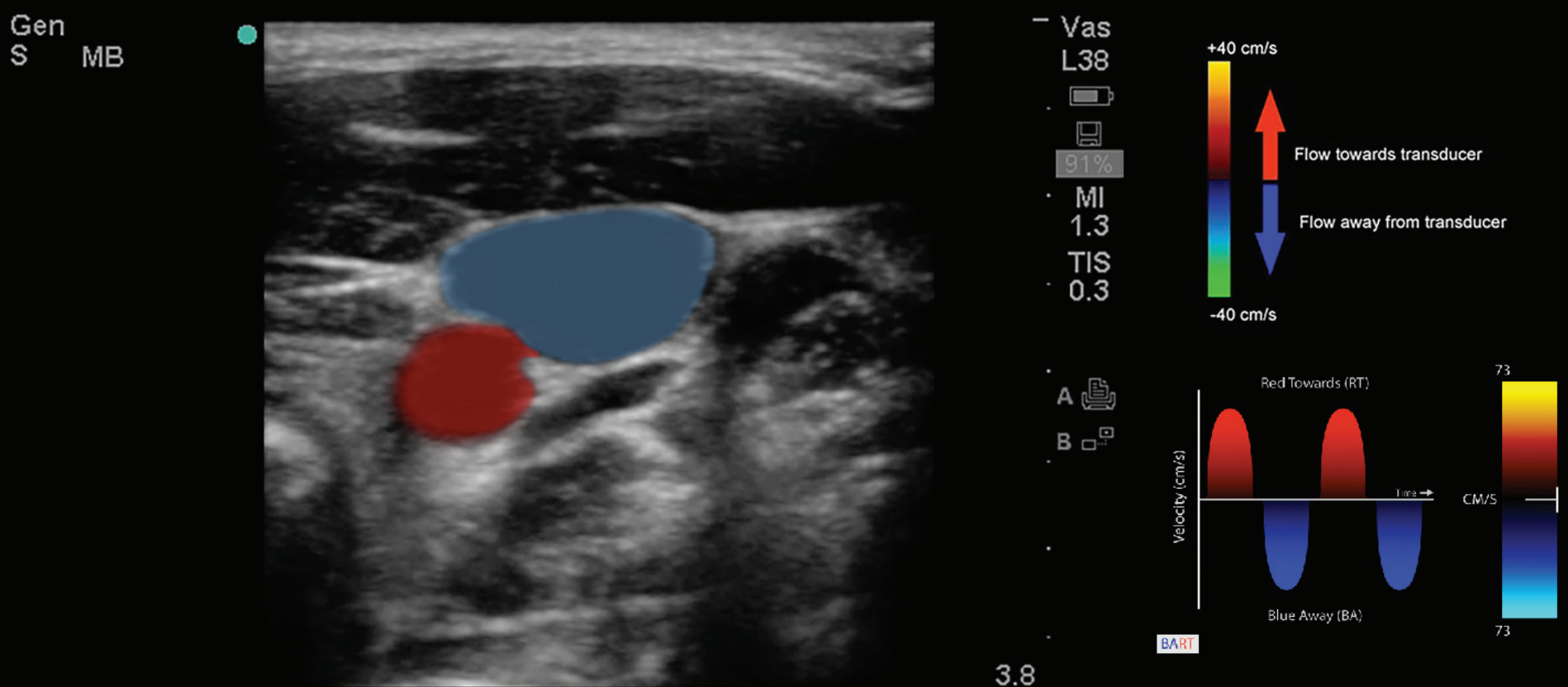


# Ultrasound Fundamentals

*Color Orientation and Scale:*

**B.A. R.T.**

**Blue Away, Red Towards**  
**(Be Aware This Can Be Changed!)**



## Use Probe Compression for Venous ID!

The angle of the probe and machine selections can flip the orientation of red and blue color Doppler, NEVER RELY ON BLUE vs RED ALONE for artery vs vein identification.