

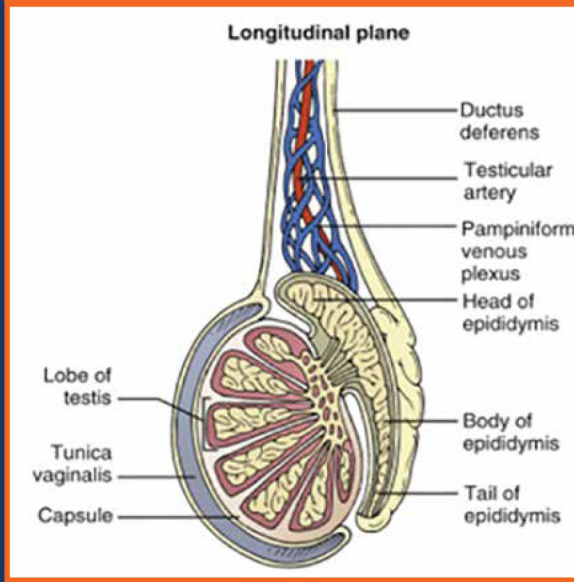
Testicular Exam

Used to identify Testicular Torsion.

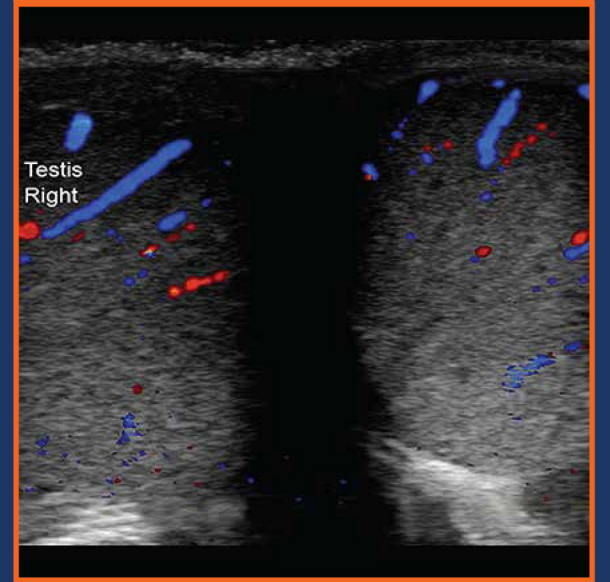
NL US Anatomy



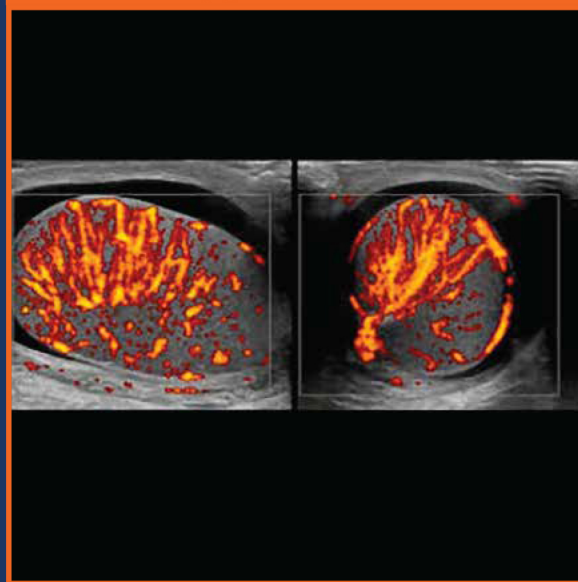
Anatomy



NL Color Doppler



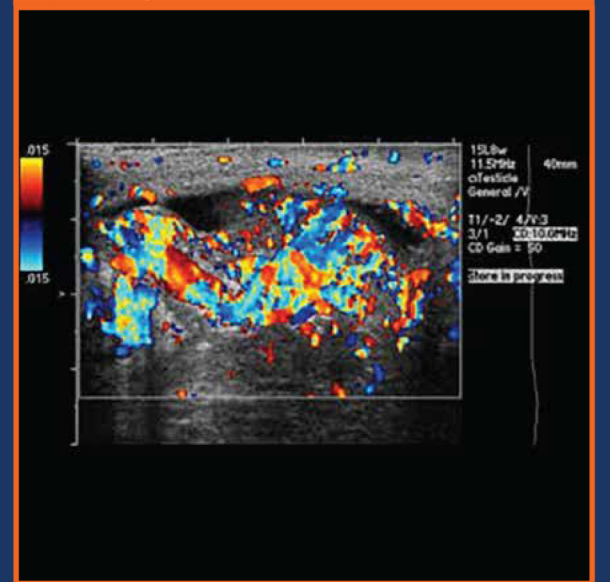
Power Doppler



↓ Low Flow

Use the more sensitive power Doppler to detect Low Flow vs No Flow

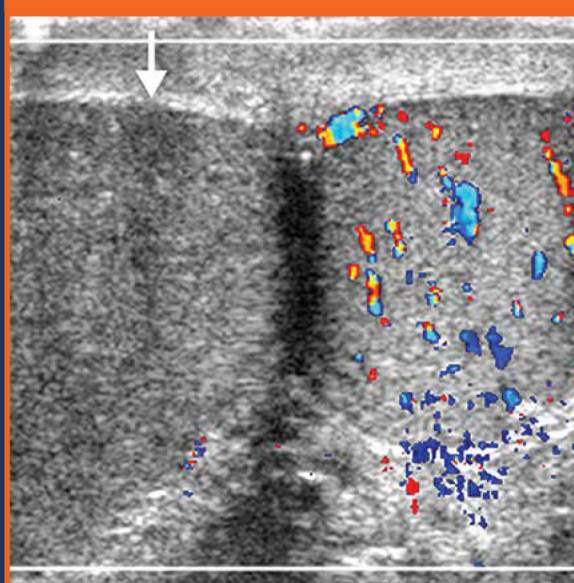
Epididymitis



↑ Flow Suggests Infection

A Torsed Testicle will have no flow on Color or Power Doppler.

Torsed Testicle



Remember to evaluate Inguinal Hernias for possible Inguinoscrotal Hernia