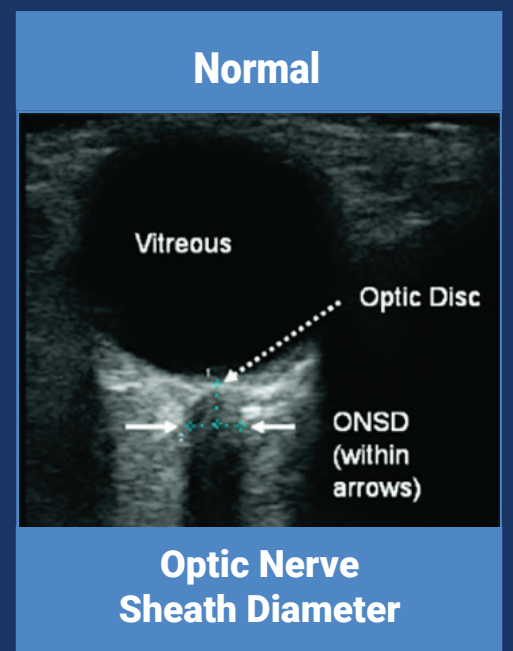
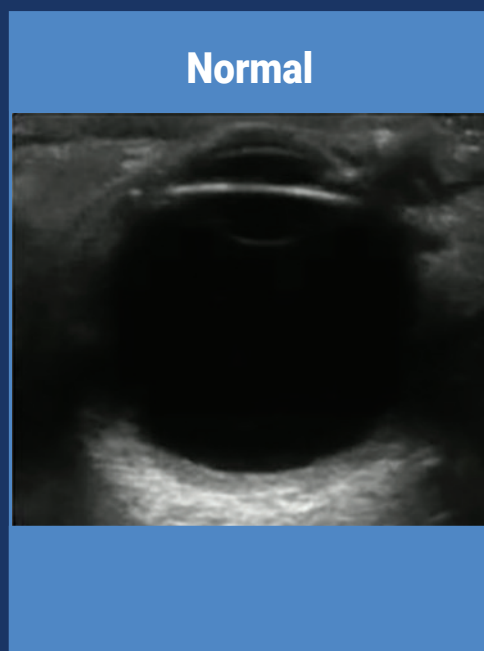
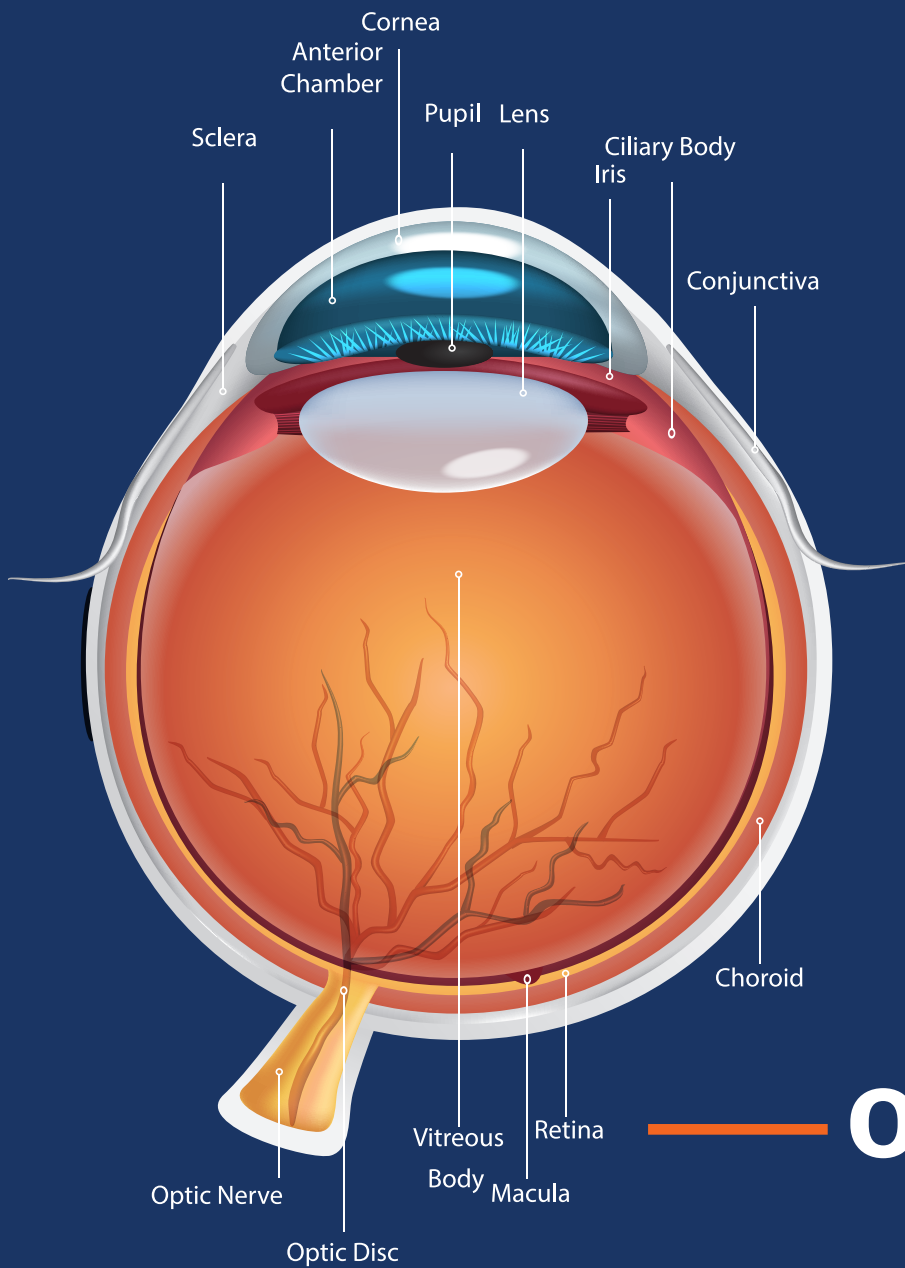


# Ocular POCUS

You must use FDA approved device for ocular or ophthalmic ultrasound. Additionally, one must use the Ocular/Ophthalmic Preset. Have your patient close both eyes, look forward and tilt their head back. Use your linear probe, with an abundant amount of gel and place the probe on the patient's eye. Do not apply pressure!



## Ocular Pathology

