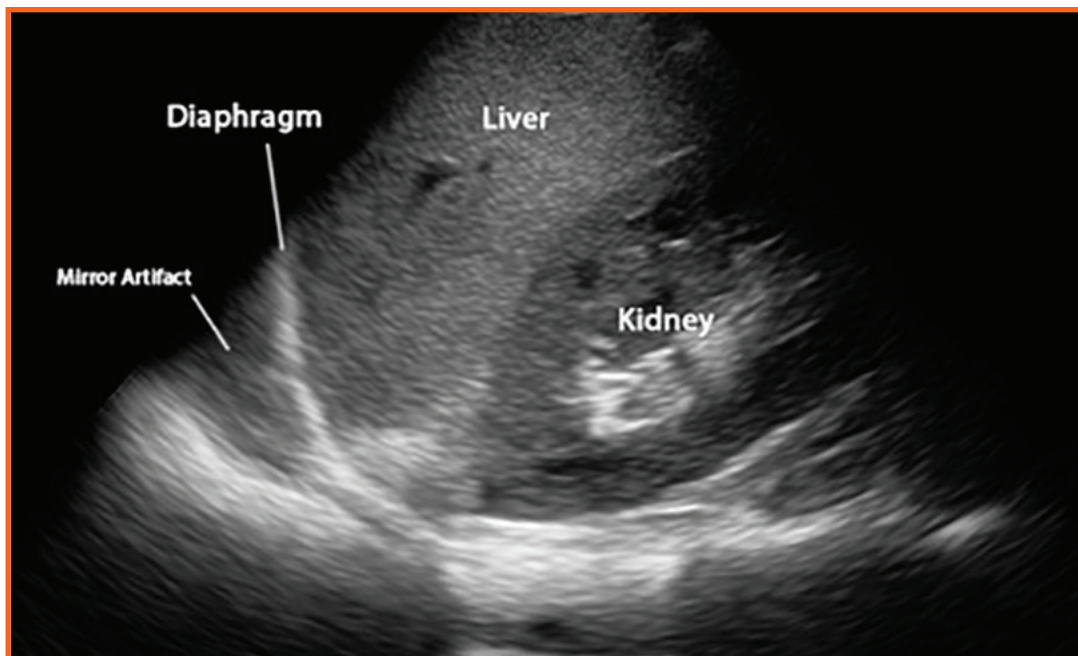


Mirror Image Artifact

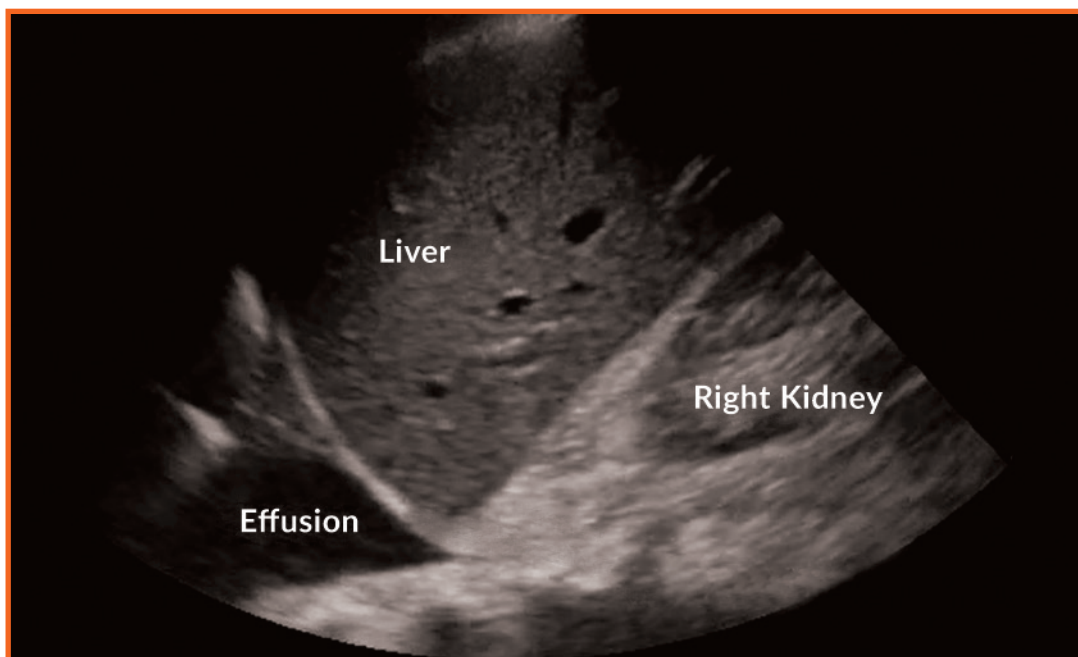
A common artifact seen in clinical practice is a "mirror artifact" caused by the reflection of ultrasound waves on a strong reflector (diaphragm, pleura, pericardium). A mirror image is created below the reflector.

Mirror artifact of the liver.



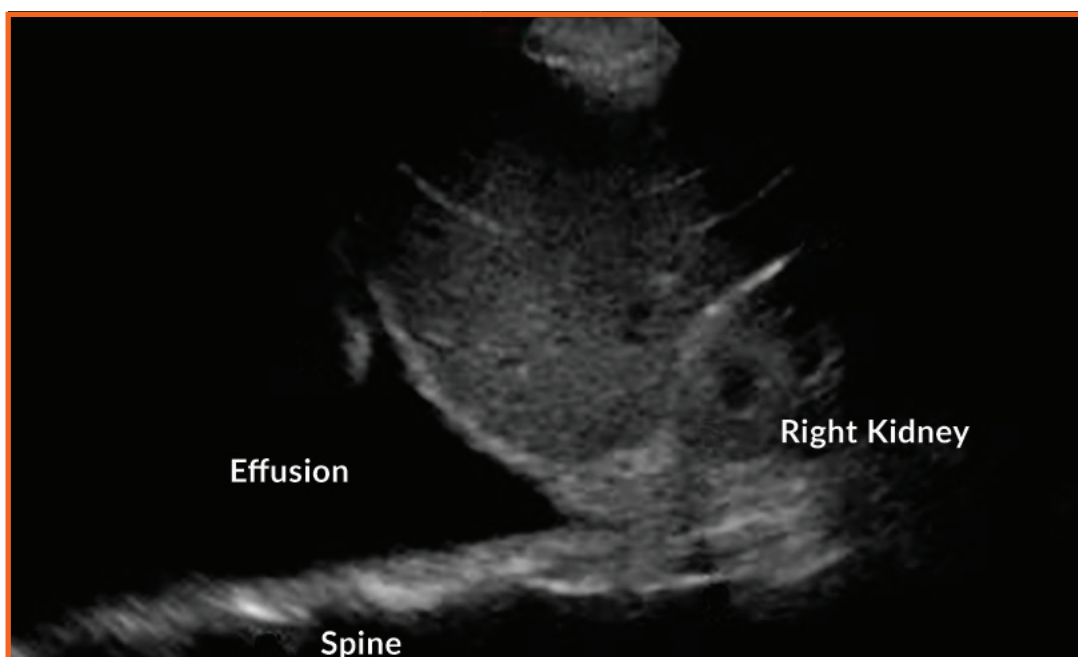
Mirror image artifact occurs when the beam encounters a highly reflective interface.

One can use the lack of a mirror artifact to aid in diagnosis.



The lack of a mirror image artifact in either of the posterior costophrenic angles suggests supra-diaphragmatic pathology.

Spine sign is positive. In this example, the spine is seen posterior to an anechoic pleural effusion.



The P.E. replaces the normal aerated lung allowing the beam to shine through.



POCUS
Point-of-Care Ultrasound
Certification Academy™

The Point-of-Care Ultrasound (POCUS) Certification Academy™ exists to provide physicians and advanced care providers the opportunity to collaborate in the shared mission of improving global health and setting the standards of excellence in POCUS.

[Pocus.org/Tips](https://pocus.org/tips)