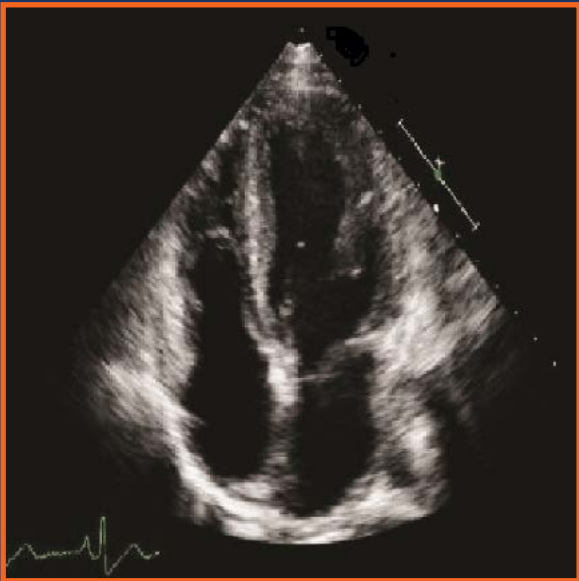


# LV & RV FX

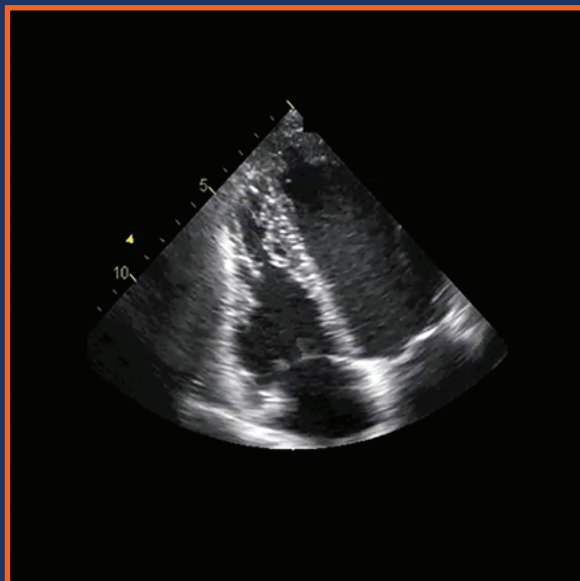
- \* Is it mild, moderate or severe?
- \* Do the cardiac walls fill and then move toward each other?
- \* Measure the **End Point Septal Separation** in Plax View.



## Left ventricle - systolic function

Ejection fraction (%)

Normal	>55
Mild	40-50
Moderate	30-40
Moderate-severe	20-30
Severe	<20



Normal RV

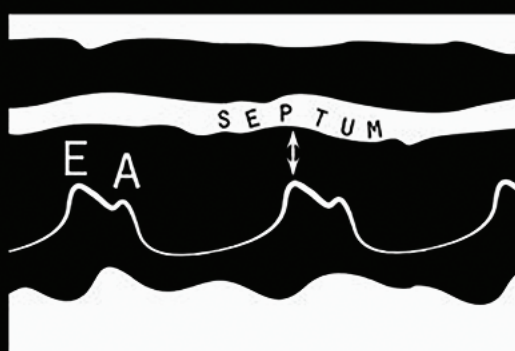


McConnell Sign

## End Point Septal Separation



PARASTERNAL  
LONG AXIS



M - MODE

NORMAL
EPSS < 7mm
CHF
EPSS > 10mm

MEASURE OPEN  
MITRAL VALVE



**POCUS**<sup>TM</sup>  
Point-of-Care Ultrasound  
Certification Academy

The Point-of-Care Ultrasound (POCUS) Certification Academy™ exists to provide physicians and advanced care providers the opportunity to collaborate in the shared mission of improving global health and setting the standards of excellence in POCUS.