

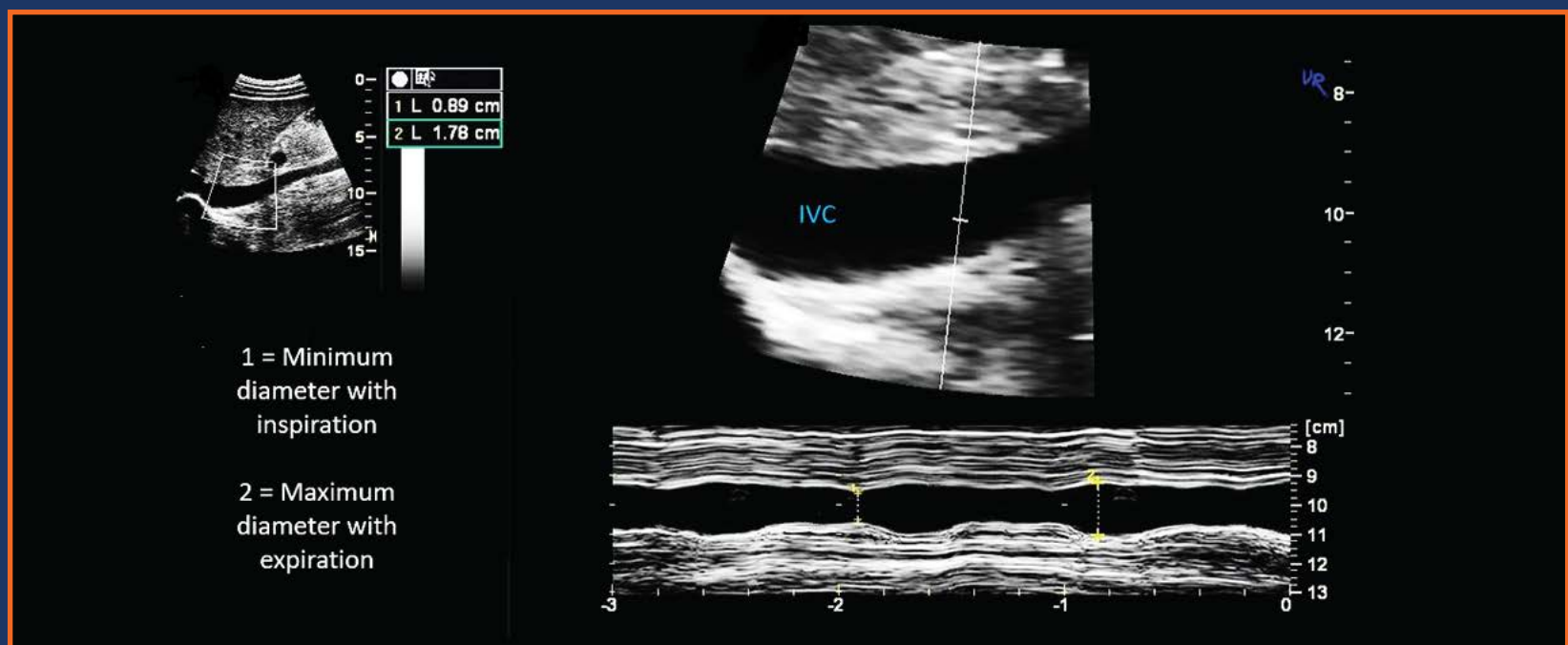
IVC

Assessment for Central Venous Pressure

Common Indications

1. Determine volume status
2. Determine approximate central venous pressure (CVP)
3. Determine fluid therapy responsiveness in management of shock
4. Determine possible cause of shock
5. Monitor response to therapy
6. Determine collapsed or plethoric IVC
7. Part of VExUS protocol

M-Mode



IVC Diameter and Variability with Respiration

IVC Diameter (cm)	Respiratory Variation	CVP (cm H ₂ O)
<1.5	Total collapse	0-5
1.5 – 2.5	>50%	6-10
1.5 – 2.5	<50%	11-15
>2.5	<50%	16-20
>2.5	No change	>20

