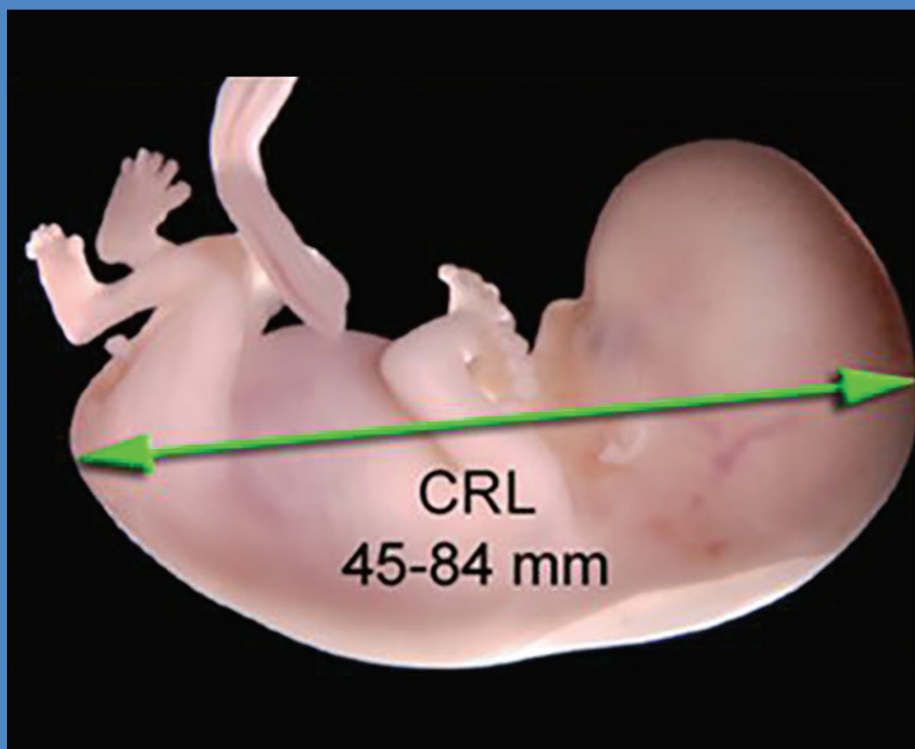


# First Trimester

## Determining Gestational Age

### Crown Rump Length (CRL)

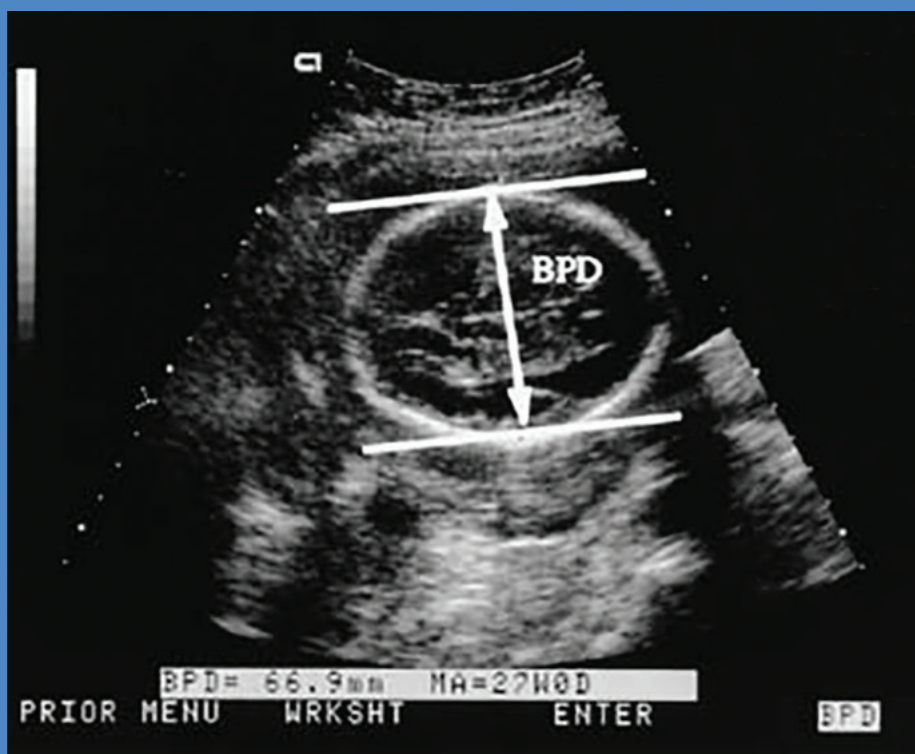


### CRL: Answers Questions About Fetal Viability

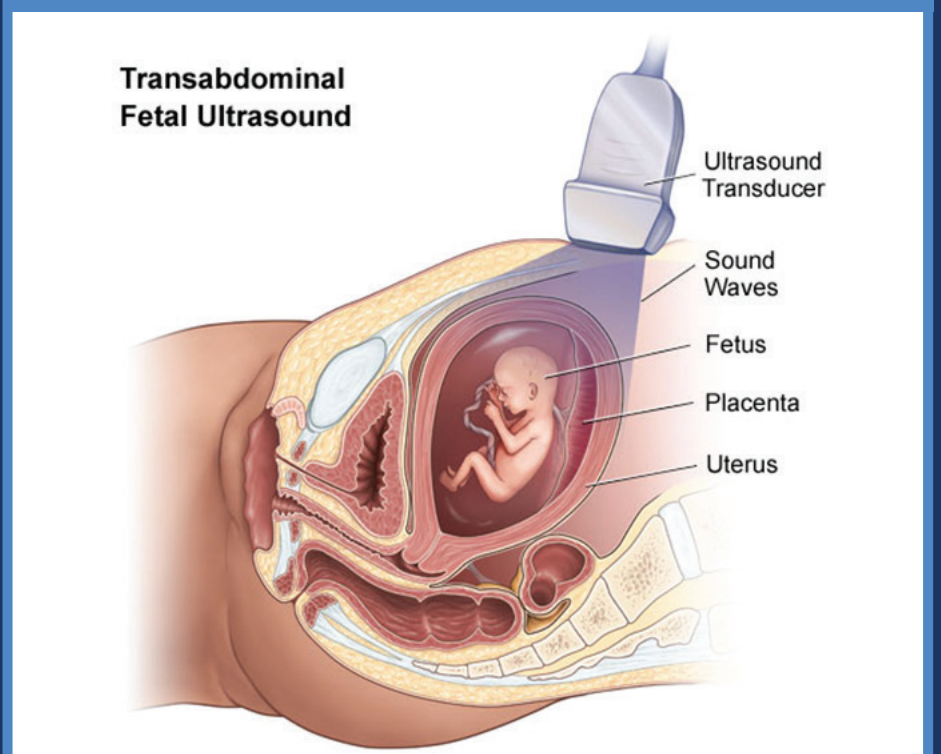


Crown Rump Length is one of the easiest ways to date an early fetus. Be careful to not include the yolk sac in your CRL measurement.

### Biparietal Diameter (BPD)



### BPD is performed later in the pregnancy than CRL



Scan through the head, measurement is made outside to inside, take caution, as it is easy to mistake the fetal abdomen for the BPD.



**POCUS™**  
Point-of-Care Ultrasound  
Certification Academy

The Point-of-Care Ultrasound (POCUS) Certification Academy™ exists to provide physicians and advanced care providers the opportunity to collaborate in the shared mission of improving global health and setting the standards of excellence in POCUS.