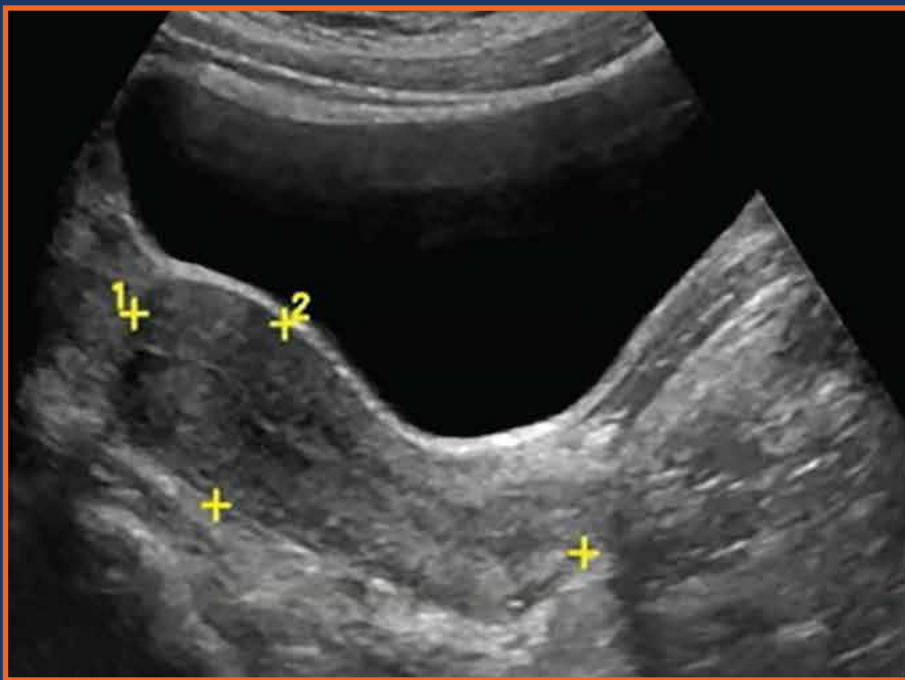


# Female Pelvic Exam

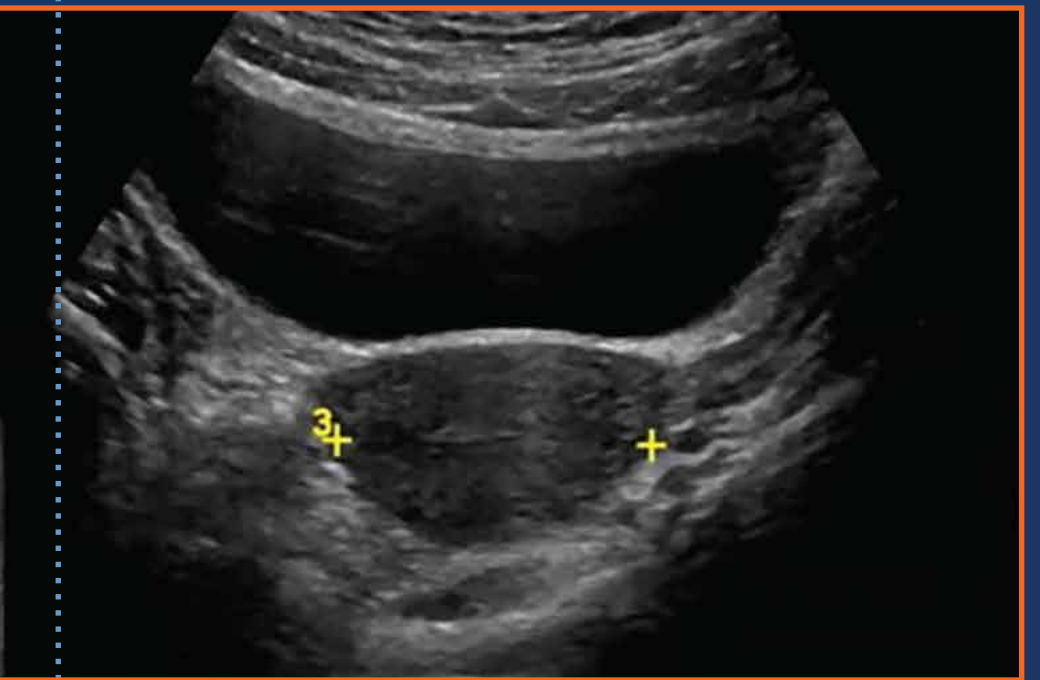
- \* Use Full Bladder as a Landmark
- \* Place Curvilinear Probe just Superior to Pubic Bone
- \* Sweep Left to Right in Longitudinal Plane
- \* Sweep Inferior to Superior in Transverse Plane

**Longitudinal Uterus**

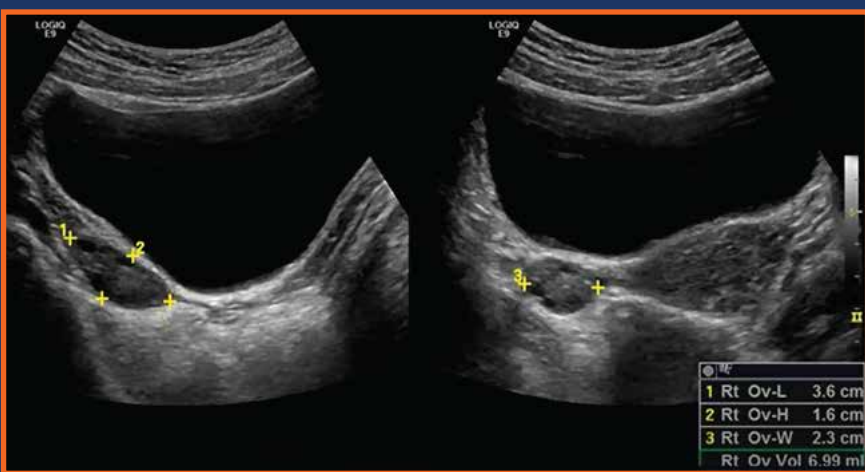


- Measure Length of Uterus
- Measure Endometrial Stripe

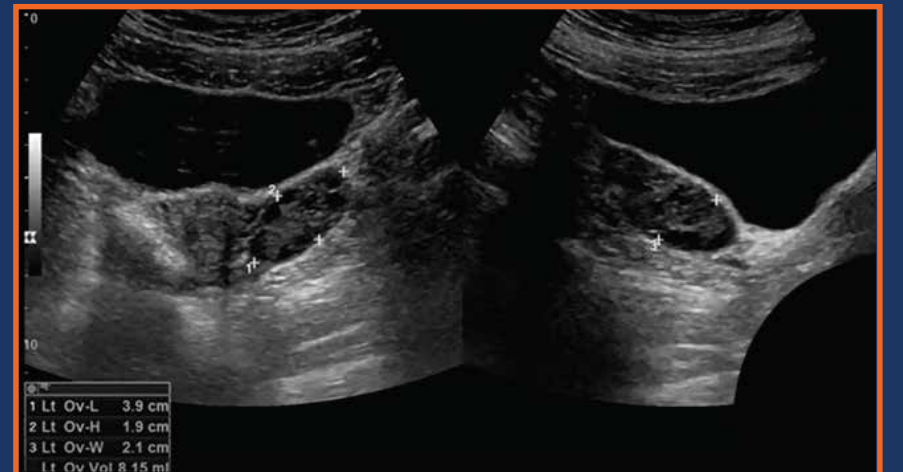
**Transverse Uterus**



- Measure Width of Uterus
- Endometrial Stripe



**Measure Right Ovary**



**Measure Left Ovary**

Check for Free Fluid in  
Pouch of Douglas /Cul De Sac



**POCUS™**  
Point-of-Care Ultrasound  
Certification Academy

The Point-of-Care Ultrasound (POCUS) Certification Academy™ exists to provide physicians and advanced care providers the opportunity to collaborate in the shared mission of improving global health and setting the standards of excellence in POCUS.

[Pocus.org/Tips](http://Pocus.org/Tips)