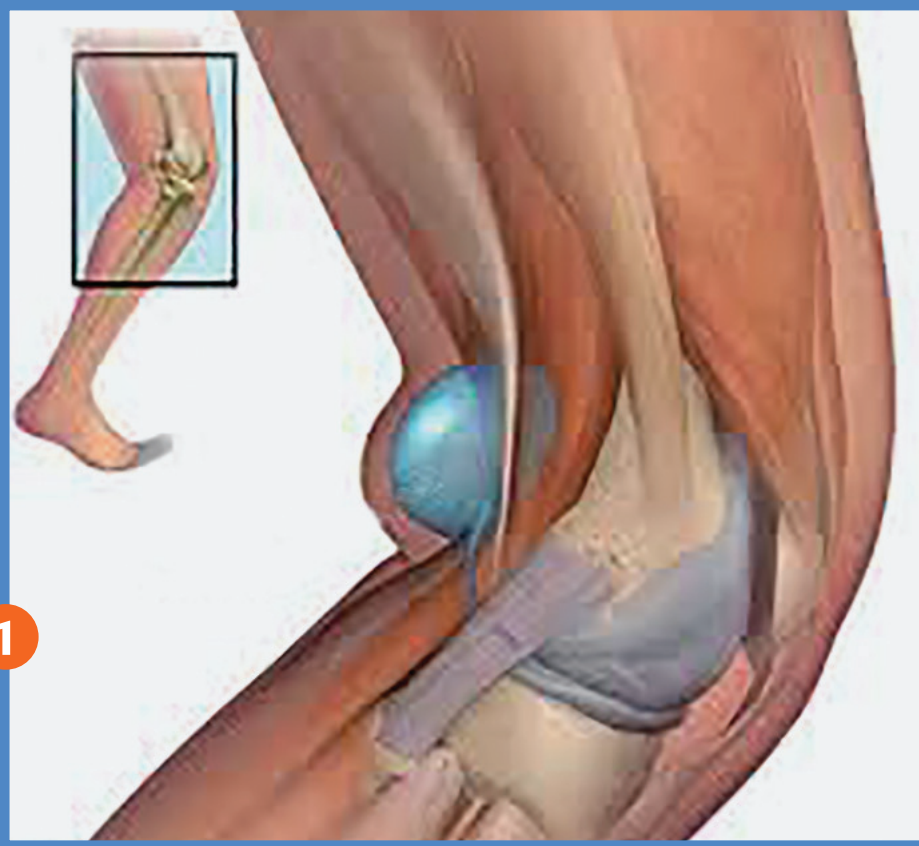


MSK

Baker's Cyst/Popliteal Cyst/Synovial Cyst

A fluid filled swelling that causes a lump at the back of the knee, leading to tightness and restricted movement. Usually the condition is due to a problem that affects the knee joint, such as arthritis or cartilage injury.

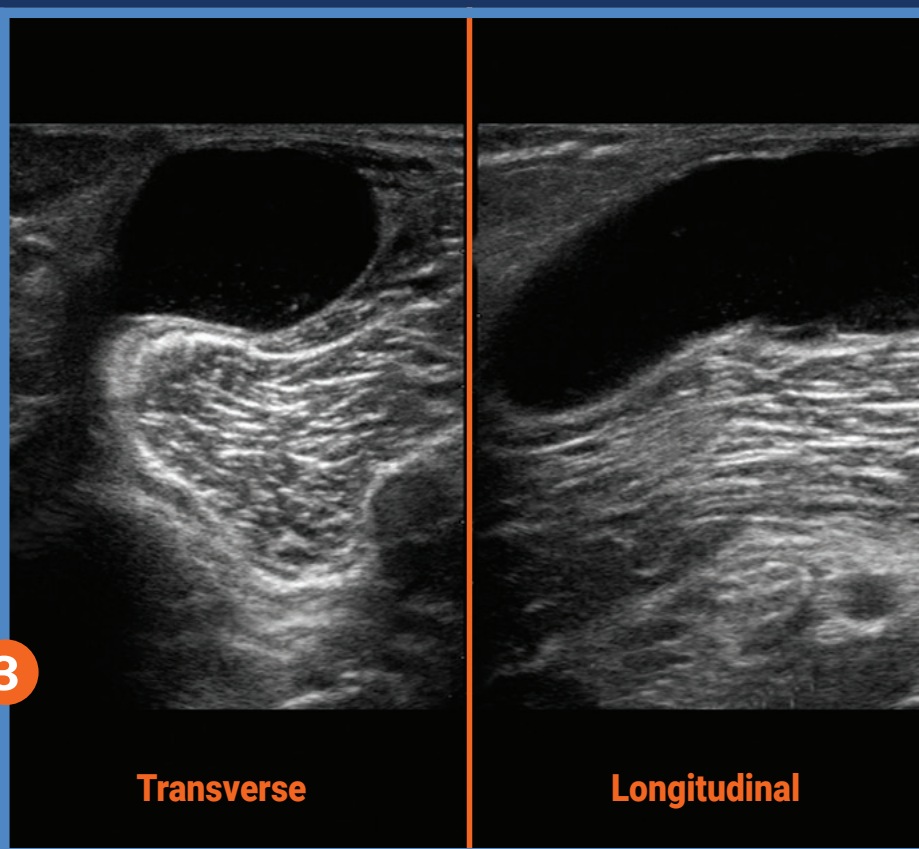
Fluid collected in anatomical space



Examine both sides



Posterior medial knee



Ultrasound guided fluid aspiration if clinically indicated



POCUS™
Point-of-Care Ultrasound
Certification Academy

The Point-of-Care Ultrasound (POCUS) Certification Academy™ exists to provide physicians and advanced care providers the opportunity to collaborate in the shared mission of improving global health and setting the standards of excellence in POCUS.

[Pocus.org/Tips](https://pocus.org/tips)