

# Knobology

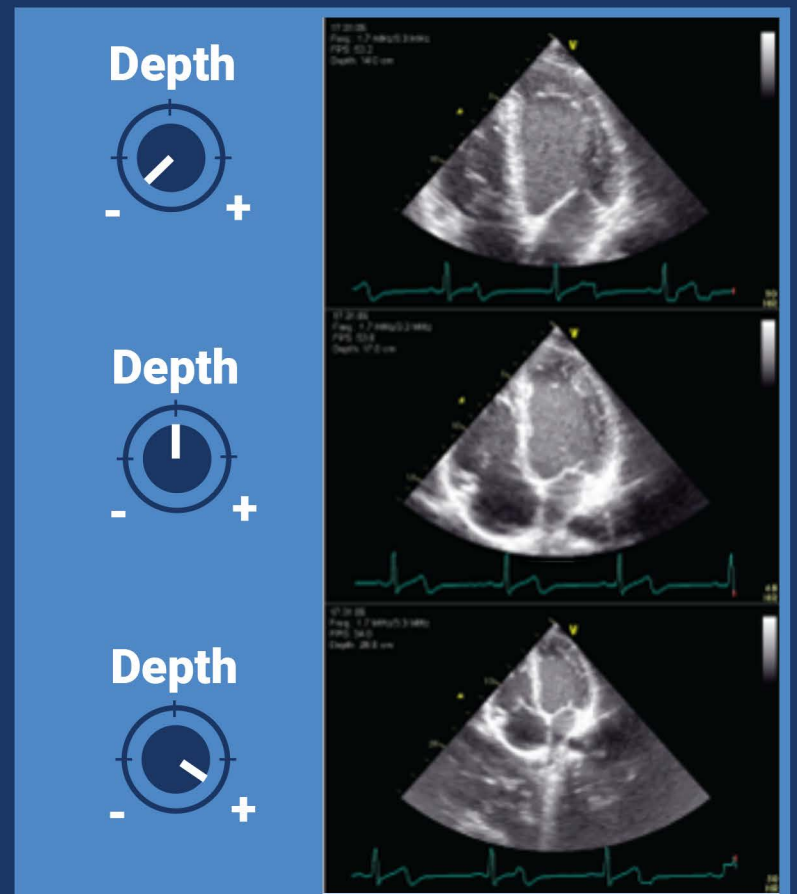
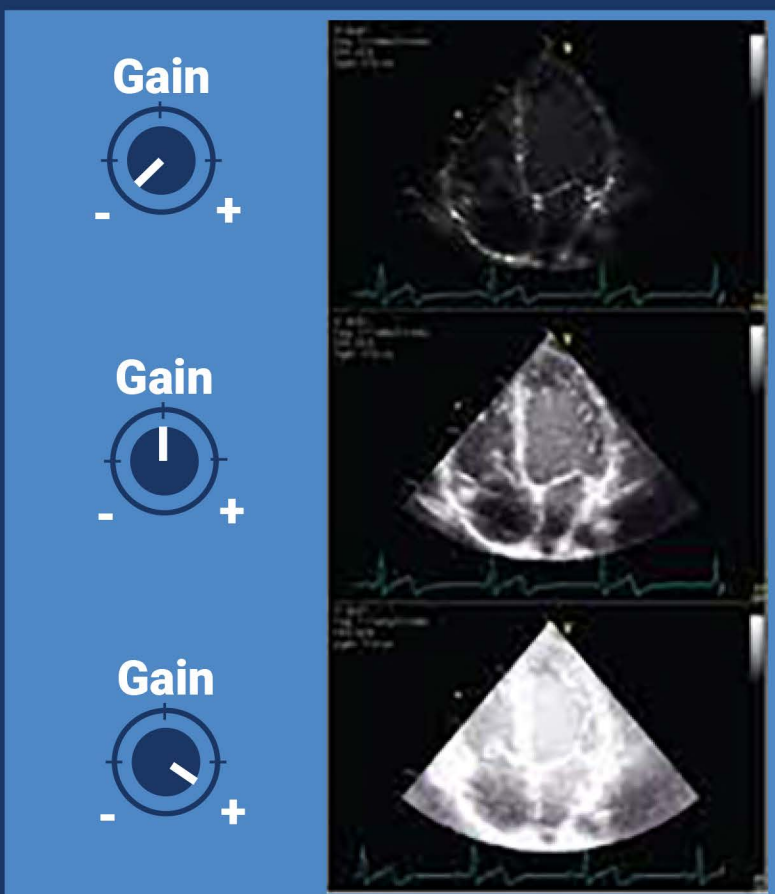
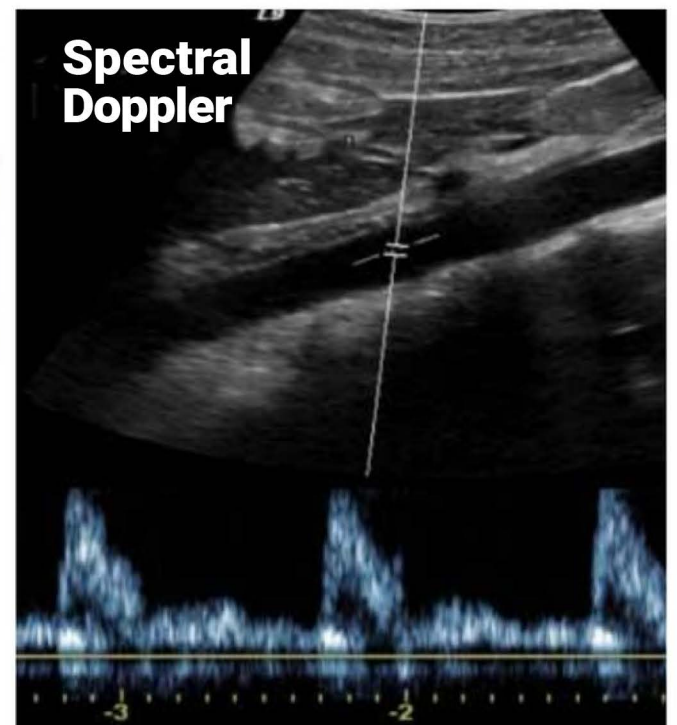
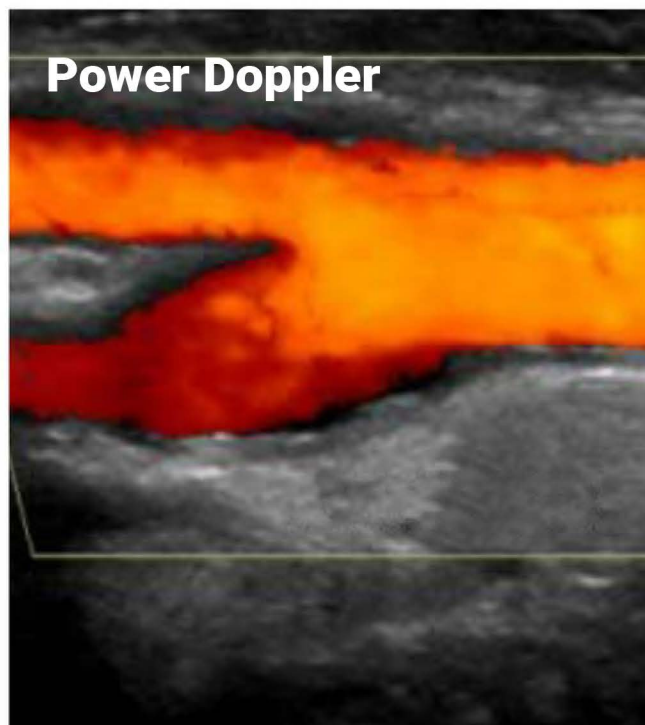
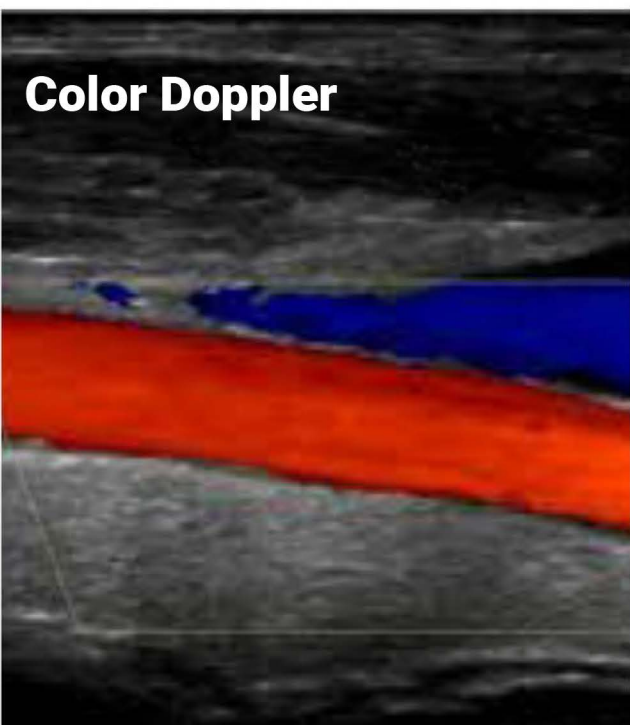
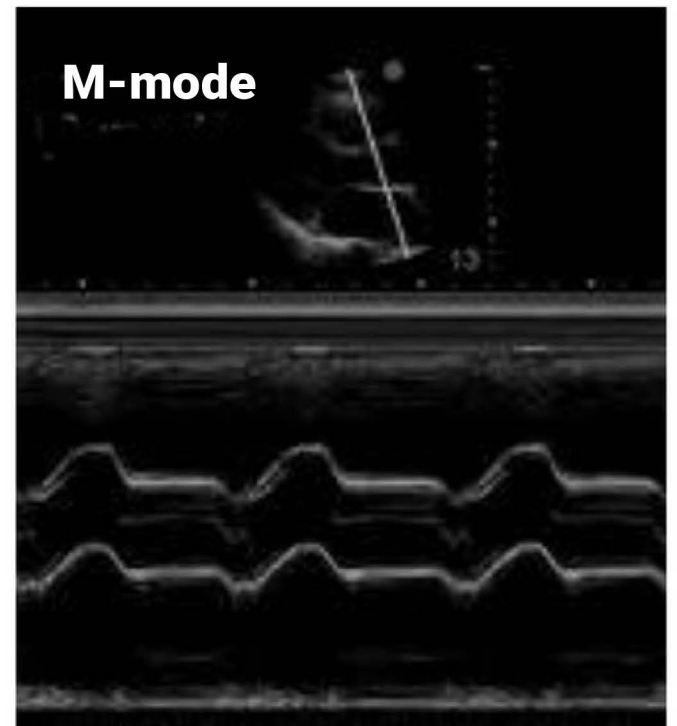
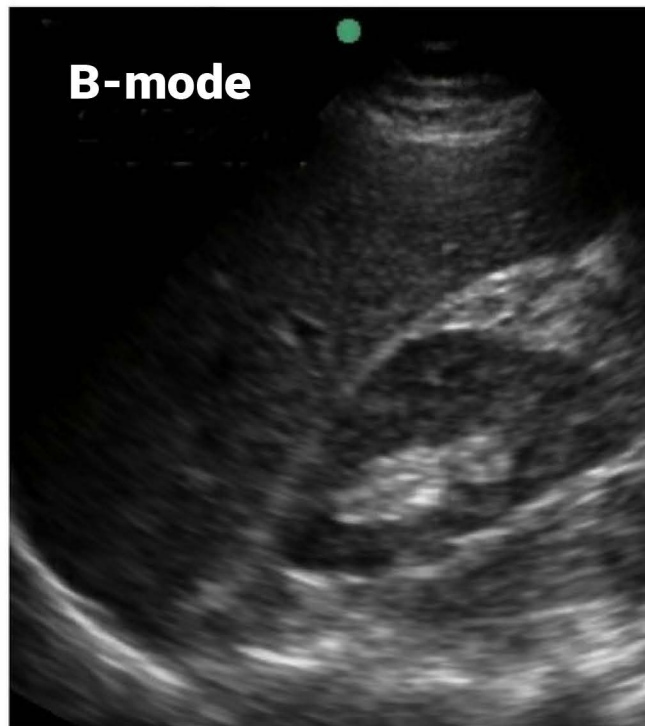
**B-mode = 2D image**

**M-mode = motion tracing**

**Color = speed/direction of flow**

**Power = low-velocity flow**

**Spectral = graphs of flow over time**



**POCUS™**  
Point-of-Care Ultrasound  
Certification Academy

The Point-of-Care Ultrasound (POCUS) Certification Academy™ exists to provide physicians and advanced care providers the opportunity to collaborate in the shared mission of improving global health and setting the standards of excellence in POCUS.

[Pocus.org](http://Pocus.org)